

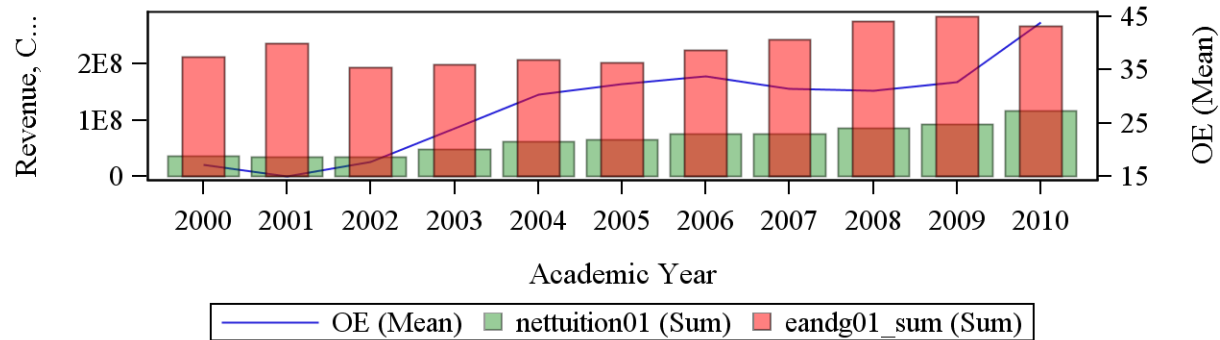
**AAEA RESPONSES TO UC SCHOOL SYSTEM GOVERNING BOARD
APPROVAL ON TUITION HIKE**

Inefficiency Trend and A Comparison of Tuition Revenue and Total Education and General Expenses Overtime

**This Research Project is Completed by Association of American Educational Analytics on
November 21, 2014**

For Interested Parties in California

instname=California Polytechnic State University-San Luis Obispo



nettuition01=Net tuition revenue is the amount of money the institution takes in from students after institutional grant aid is provided (this is not the same as the net tuition number available in IPEDS which is net of all discounts and allowances applied to tuition and fees)

eandg01 sum=Total Education and General Expenses

OE=Operating Inefficiency in %==>Ratio of Tuition Revenue over Total Education and General Expenses

Please Do not Quote without Written Consent from the Association

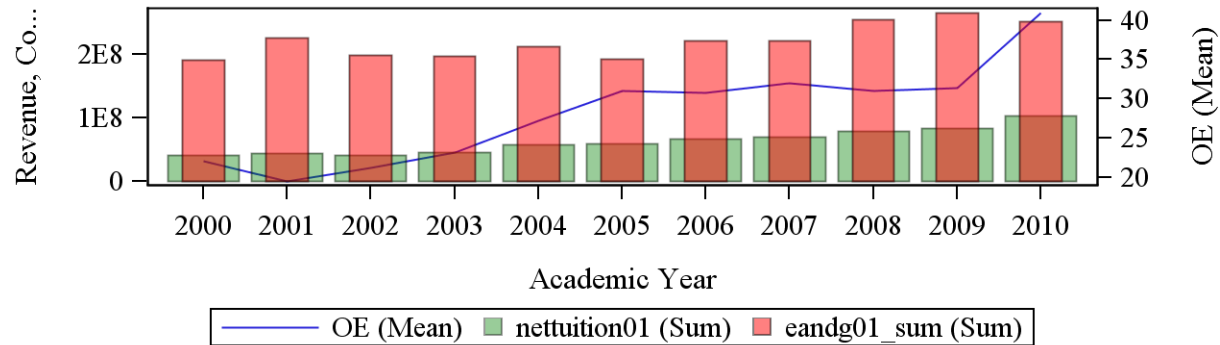
AAEA RESPONSES TO UC SCHOOL SYSTEM GOVERNING BOARD APPROVAL ON TUITION HIKE

Inefficiency Trend and A Comparison of Tuition Revenue and Total Education and General Expenses Overtime

**This Research Project is Completed by Association of American Educational Analytics on
November 21, 2014**

For Interested Parties in California

instname=California State Polytechnic University-Pomona



nettuition01=Net tuition revenue is the amount of money the institution takes in from students after institutional grant aid is provided (this is not the same as the net tuition number available in IPEDS which is net of all discounts and allowances applied to tuition and fees)

eandg01 sum=Total Education and General Expenses

OE=Operating Inefficiency in %==>Ratio of Tuition Revenue over Total Education and General Expenses

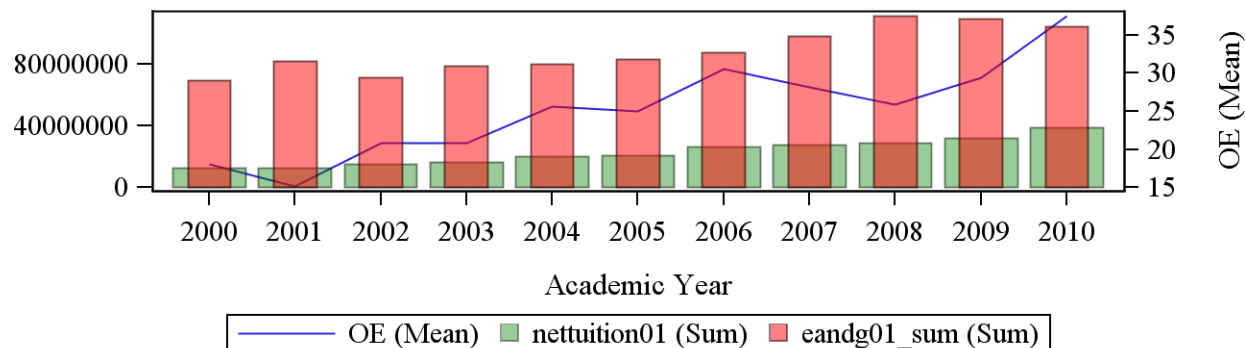
Please Do not Quote without Written Consent from the Association

AAEA RESPONSES TO UC SCHOOL SYSTEM GOVERNING BOARD APPROVAL ON TUITION HIKE

Inefficiency Trend and A Comparison of Tuition Revenue and Total Education and General Expenses Overtime

**This Research Project is Completed by Association of American Educational Analytics on
November 21, 2014**

**For Interested Parties in California
instname=California State University-Bakersfield**



nettuition01=Net tuition revenue is the amount of money the institution takes in from students after institutional grant aid is provided (this is not the same as the net tuition number available in IPEDS which is net of all discounts and allowances applied to tuition and fees)

eandg01_sum=Total Education and General Expenses

OE=Operating Inefficiency in %==>Ratio of Tuition Revenue over Total Education and General Expenses

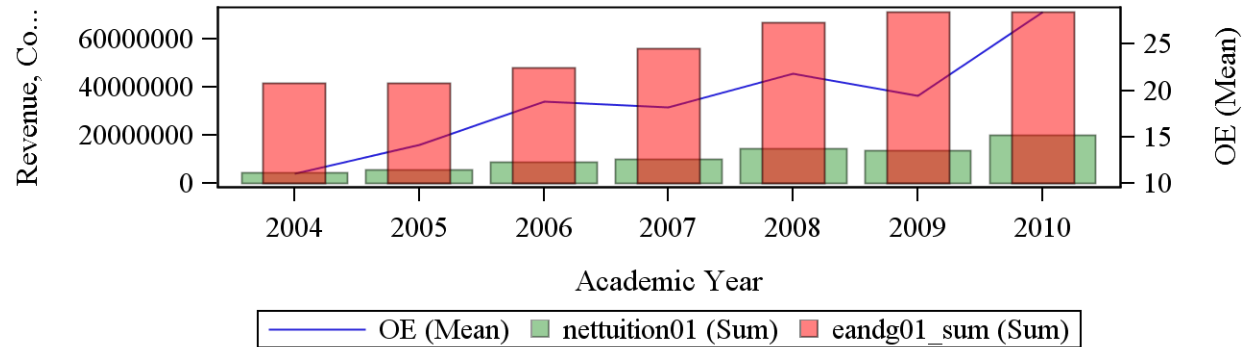
Please Do not Quote without Written Consent from the Association

**AAEA RESPONSES TO UC SCHOOL SYSTEM GOVERNING BOARD
APPROVAL ON TUITION HIKE**

Inefficiency Trend and A Comparison of Tuition Revenue and Total Education and General Expenses Overtime

**This Research Project is Completed by Association of American Educational Analytics on
November 21, 2014**

**For Interested Parties in California
instname=California State University-Channel Islands**



nettuition01=Net tuition revenue is the amount of money the institution takes in from students after institutional grant aid is provided (this is not the same as the net tuition number available in IPEDS which is net of all discounts and allowances applied to tuition and fees)

eandg01_sum=Total Education and General Expenses

OE=Operating Inefficiency in %==>Ratio of Tuition Revenue over Total Education and General Expenses

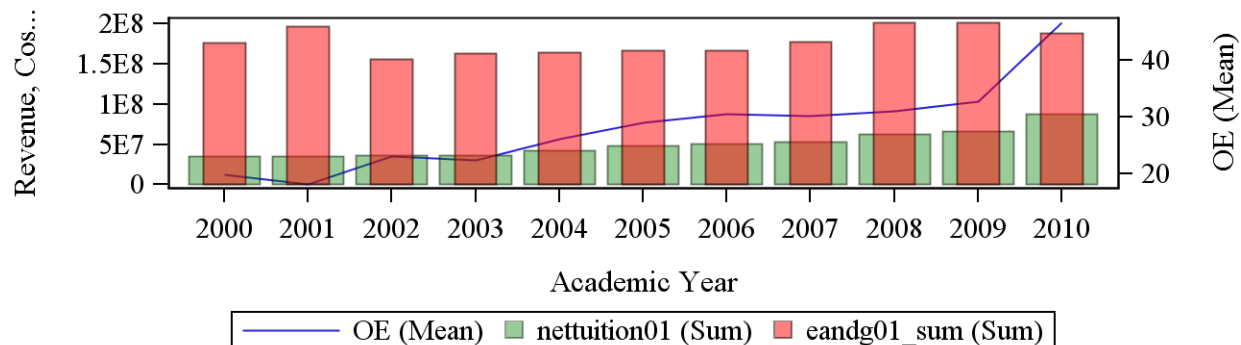
Please Do not Quote without Written Consent from the Association

AAEA RESPONSES TO UC SCHOOL SYSTEM GOVERNING BOARD APPROVAL ON TUITION HIKE

Inefficiency Trend and A Comparison of Tuition Revenue and Total Education and General Expenses Overtime

**This Research Project is Completed by Association of American Educational Analytics on
November 21, 2014**

**For Interested Parties in California
instname=California State University-Chico**



nettuition01=Net tuition revenue is the amount of money the institution takes in from students after institutional grant aid is provided (this is not the same as the net tuition number available in IPEDS which is net of all discounts and allowances applied to tuition and fees)

eandg01 sum=Total Education and General Expenses

OE=Operating Inefficiency in %==>Ratio of Tuition Revenue over Total Education and General Expenses

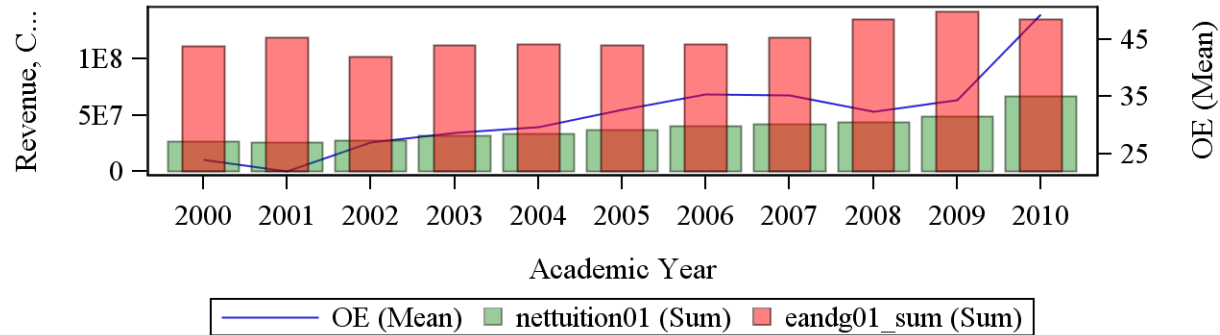
Please Do not Quote without Written Consent from the Association

**AAEA RESPONSES TO UC SCHOOL SYSTEM GOVERNING BOARD
APPROVAL ON TUITION HIKE**

Inefficiency Trend and A Comparison of Tuition Revenue and Total Education and General Expenses Overtime

**This Research Project is Completed by Association of American Educational Analytics on
November 21, 2014**

**For Interested Parties in California
instname=California State University-Dominguez Hills**



nettuition01=Net tuition revenue is the amount of money the institution takes in from students after institutional grant aid is provided (this is not the same as the net tuition number available in IPEDS which is net of all discounts and allowances applied to tuition and fees)

eandg01 sum=Total Education and General Expenses

OE=Operating Inefficiency in %==>Ratio of Tuition Revenue over Total Education and General Expenses

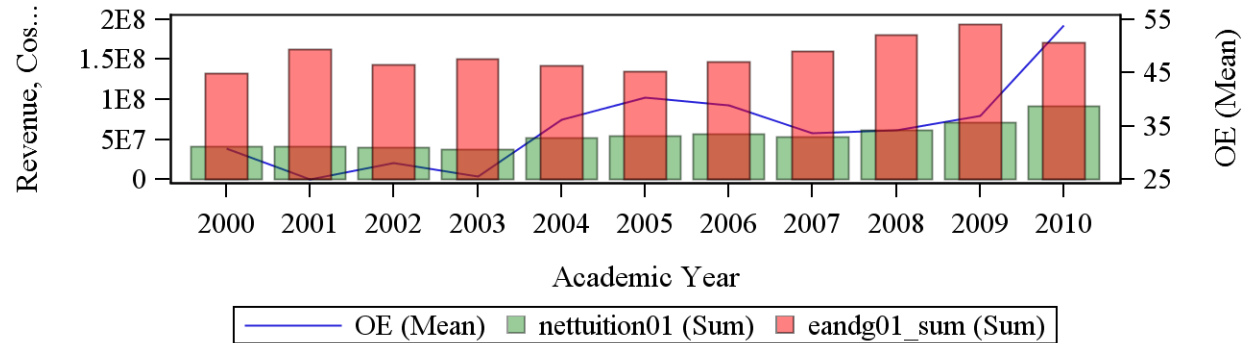
Please Do not Quote without Written Consent from the Association

**AAEA RESPONSES TO UC SCHOOL SYSTEM GOVERNING BOARD
APPROVAL ON TUITION HIKE**

Inefficiency Trend and A Comparison of Tuition Revenue and Total Education and General Expenses Overtime

**This Research Project is Completed by Association of American Educational Analytics on
November 21, 2014**

**For Interested Parties in California
instname=California State University-East Bay**



nettuition01=Net tuition revenue is the amount of money the institution takes in from students after institutional grant aid is provided (this is not the same as the net tuition number available in IPEDS which is net of all discounts and allowances applied to tuition and fees)

eandg01 sum=Total Education and General Expenses

OE=Operating Inefficiency in %==>Ratio of Tuition Revenue over Total Education and General Expenses

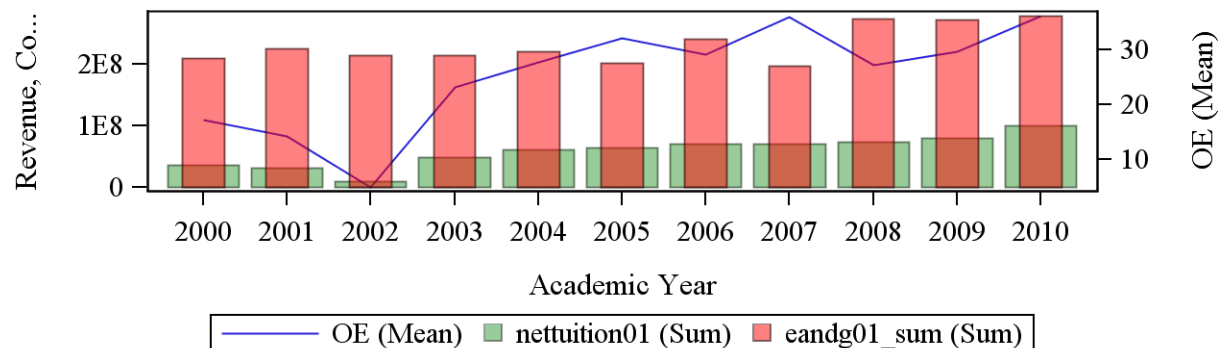
Please Do not Quote without Written Consent from the Association

**AAEA RESPONSES TO UC SCHOOL SYSTEM GOVERNING BOARD
APPROVAL ON TUITION HIKE**

Inefficiency Trend and A Comparison of Tuition Revenue and Total Education and General Expenses Overtime

**This Research Project is Completed by Association of American Educational Analytics on
November 21, 2014**

**For Interested Parties in California
instname=California State University-Fresno**



nettuition01=Net tuition revenue is the amount of money the institution takes in from students after institutional grant aid is provided (this is not the same as the net tuition number available in IPEDS which is net of all discounts and allowances applied to tuition and fees)

eandg01 sum=Total Education and General Expenses

OE=Operating Inefficiency in %==>Ratio of Tuition Revenue over Total Education and General Expenses

Please Do not Quote without Written Consent from the Association

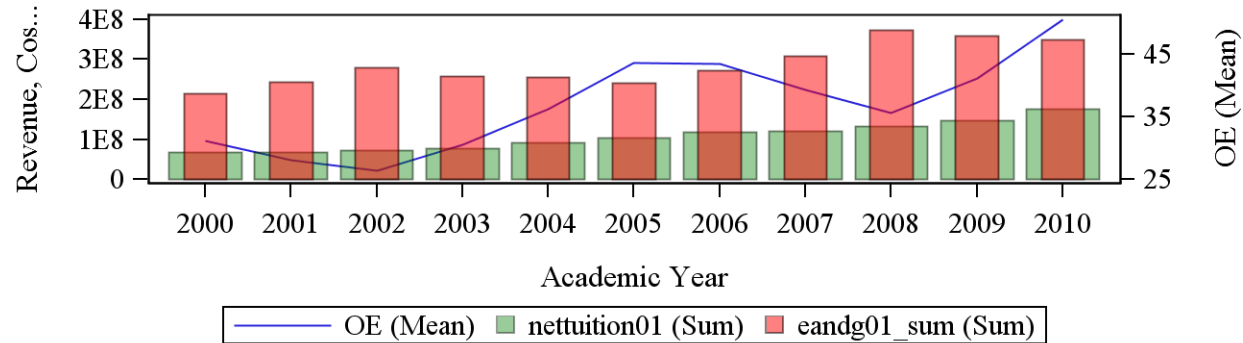
**AAEA RESPONSES TO UC SCHOOL SYSTEM GOVERNING BOARD
APPROVAL ON TUITION HIKE**

Inefficiency Trend and A Comparison of Tuition Revenue and Total Education and General Expenses Overtime

**This Research Project is Completed by Association of American Educational Analytics on
November 21, 2014**

For Interested Parties in California

instname=California State University-Fullerton



nettuition01=Net tuition revenue is the amount of money the institution takes in from students after institutional grant aid is provided (this is not the same as the net tuition number available in IPEDS which is net of all discounts and allowances applied to tuition and fees)

eandg01_sum=Total Education and General Expenses

OE=Operating Inefficiency in %==>Ratio of Tuition Revenue over Total Education and General Expenses

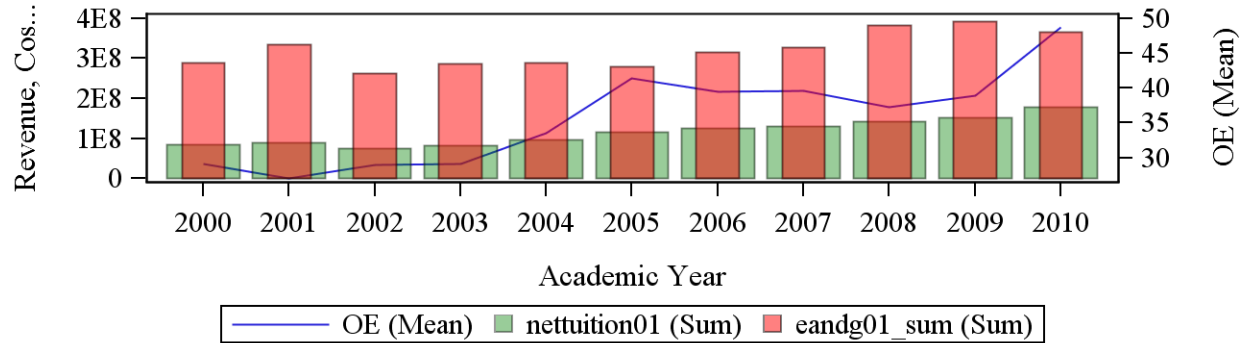
Please Do not Quote without Written Consent from the Association

**AAEA RESPONSES TO UC SCHOOL SYSTEM GOVERNING BOARD
APPROVAL ON TUITION HIKE**

Inefficiency Trend and A Comparison of Tuition Revenue and Total Education and General Expenses Overtime

**This Research Project is Completed by Association of American Educational Analytics on
November 21, 2014**

**For Interested Parties in California
instname=California State University-Long Beach**



nettuition01=Net tuition revenue is the amount of money the institution takes in from students after institutional grant aid is provided (this is not the same as the net tuition number available in IPEDS which is net of all discounts and allowances applied to tuition and fees)

eandg01_sum=Total Education and General Expenses

OE=Operating Inefficiency in %==>Ratio of Tuition Revenue over Total Education and General Expenses

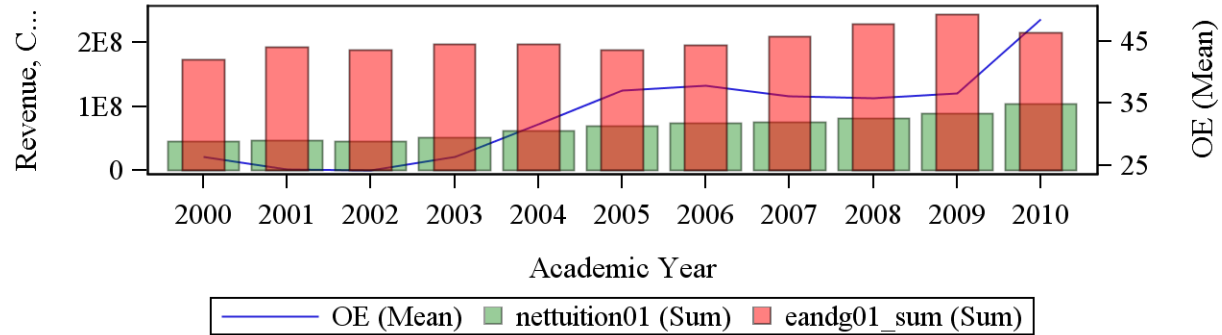
Please Do not Quote without Written Consent from the Association

**AAEA RESPONSES TO UC SCHOOL SYSTEM GOVERNING BOARD
APPROVAL ON TUITION HIKE**

Inefficiency Trend and A Comparison of Tuition Revenue and Total Education and General Expenses Overtime

**This Research Project is Completed by Association of American Educational Analytics on
November 21, 2014**

**For Interested Parties in California
instname=California State University-Los Angeles**



nettuition01=Net tuition revenue is the amount of money the institution takes in from students after institutional grant aid is provided (this is not the same as the net tuition number available in IPEDS which is net of all discounts and allowances applied to tuition and fees)

eandg01 sum=Total Education and General Expenses

OE=Operating Inefficiency in %==>Ratio of Tuition Revenue over Total Education and General Expenses

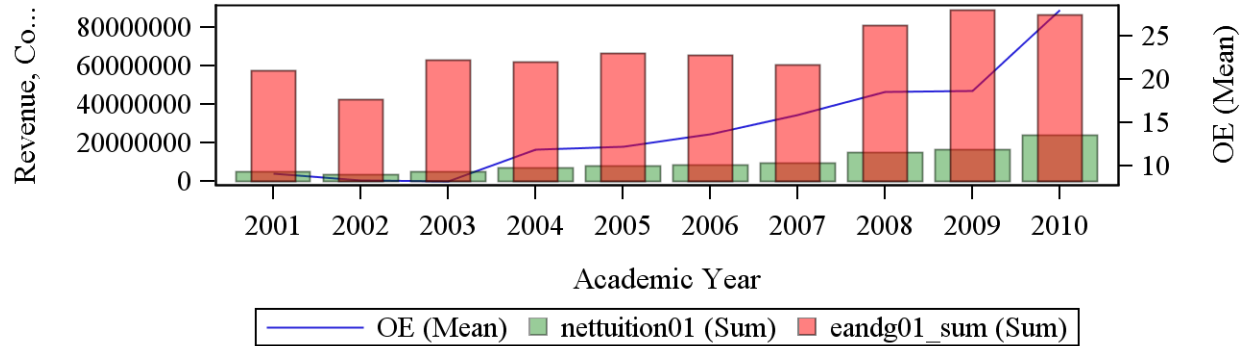
Please Do not Quote without Written Consent from the Association

**AAEA RESPONSES TO UC SCHOOL SYSTEM GOVERNING BOARD
APPROVAL ON TUITION HIKE**

Inefficiency Trend and A Comparison of Tuition Revenue and Total Education and General Expenses Overtime

**This Research Project is Completed by Association of American Educational Analytics on
November 21, 2014**

**For Interested Parties in California
instname=California State University-Monterey Bay**



nettuition01=Net tuition revenue is the amount of money the institution takes in from students after institutional grant aid is provided (this is not the same as the net tuition number available in IPEDS which is net of all discounts and allowances applied to tuition and fees)

eandg01_sum=Total Education and General Expenses

OE=Operating Inefficiency in %==>Ratio of Tuition Revenue over Total Education and General Expenses

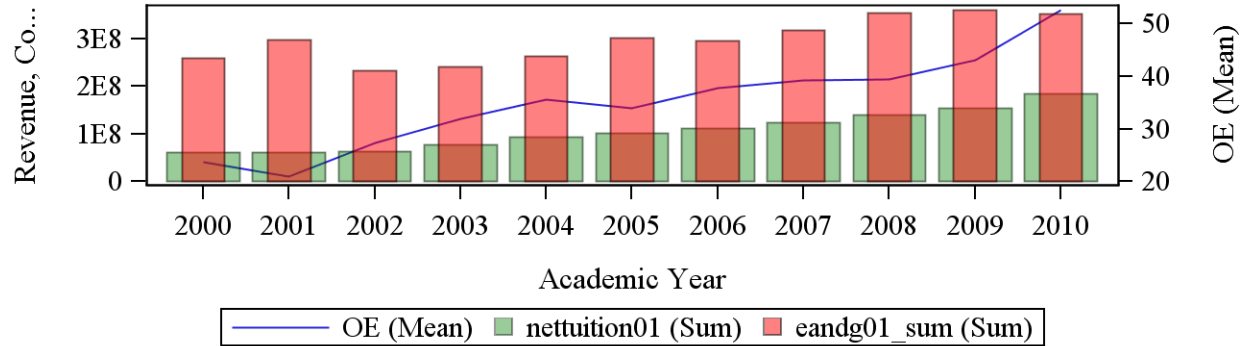
Please Do not Quote without Written Consent from the Association

**AAEA RESPONSES TO UC SCHOOL SYSTEM GOVERNING BOARD
APPROVAL ON TUITION HIKE**

Inefficiency Trend and A Comparison of Tuition Revenue and Total Education and General Expenses Overtime

**This Research Project is Completed by Association of American Educational Analytics on
November 21, 2014**

**For Interested Parties in California
instname=California State University-Northridge**



nettuition01=Net tuition revenue is the amount of money the institution takes in from students after institutional grant aid is provided (this is not the same as the net tuition number available in IPEDS which is net of all discounts and allowances applied to tuition and fees)

eandg01_sum=Total Education and General Expenses

OE=Operating Inefficiency in %==>Ratio of Tuition Revenue over Total Education and General Expenses

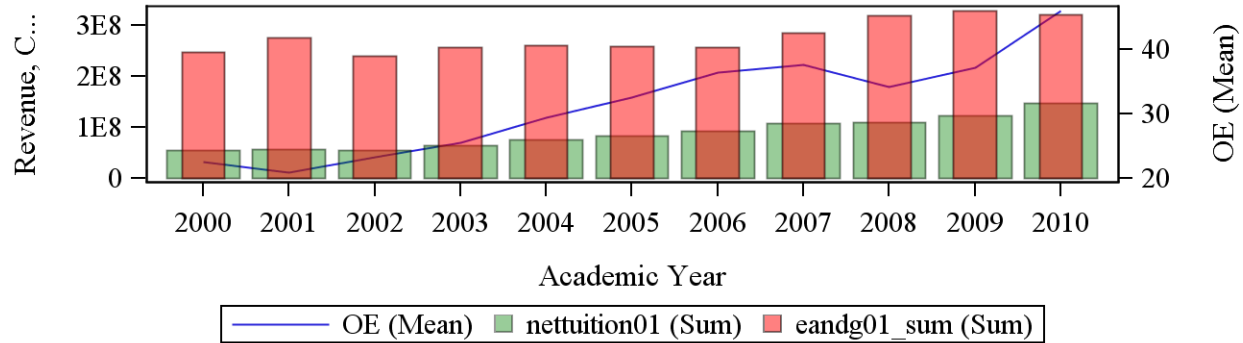
Please Do not Quote without Written Consent from the Association

**AAEA RESPONSES TO UC SCHOOL SYSTEM GOVERNING BOARD
APPROVAL ON TUITION HIKE**

Inefficiency Trend and A Comparison of Tuition Revenue and Total Education and General Expenses Overtime

**This Research Project is Completed by Association of American Educational Analytics on
November 21, 2014**

**For Interested Parties in California
instname=California State University-Sacramento**



nettuition01=Net tuition revenue is the amount of money the institution takes in from students after institutional grant aid is provided (this is not the same as the net tuition number available in IPEDS which is net of all discounts and allowances applied to tuition and fees)

eandg01_sum=Total Education and General Expenses

OE=Operating Inefficiency in %==>Ratio of Tuition Revenue over Total Education and General Expenses

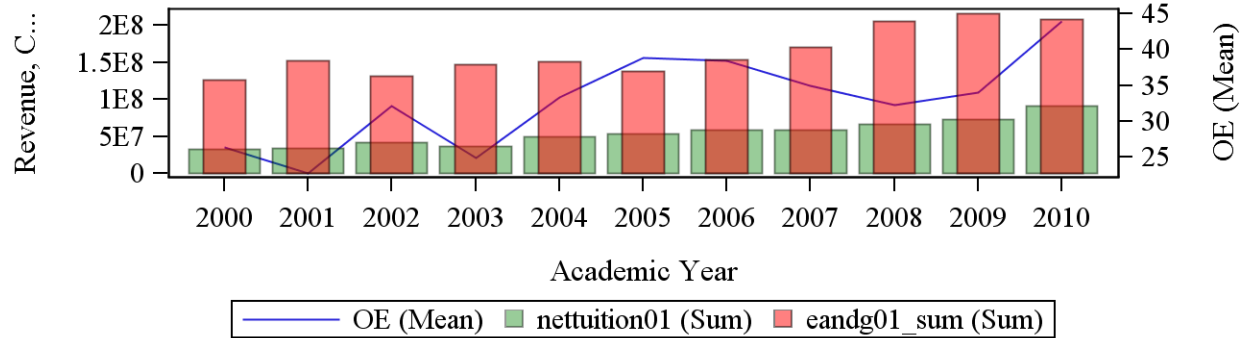
Please Do not Quote without Written Consent from the Association

**AAEA RESPONSES TO UC SCHOOL SYSTEM GOVERNING BOARD
APPROVAL ON TUITION HIKE**

Inefficiency Trend and A Comparison of Tuition Revenue and Total Education and General Expenses Overtime

**This Research Project is Completed by Association of American Educational Analytics on
November 21, 2014**

**For Interested Parties in California
instname=California State University-San Bernardino**



nettuition01=Net tuition revenue is the amount of money the institution takes in from students after institutional grant aid is provided (this is not the same as the net tuition number available in IPEDS which is net of all discounts and allowances applied to tuition and fees)

eandg01 sum=Total Education and General Expenses

OE=Operating Inefficiency in %==>Ratio of Tuition Revenue over Total Education and General Expenses

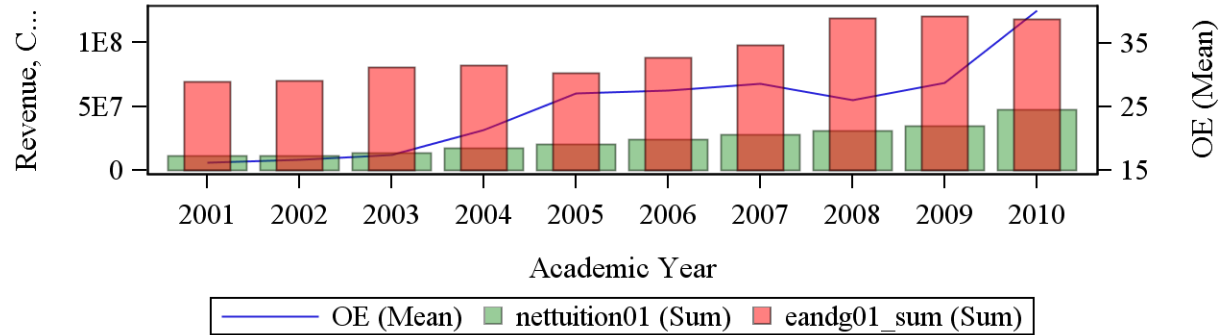
Please Do not Quote without Written Consent from the Association

**AAEA RESPONSES TO UC SCHOOL SYSTEM GOVERNING BOARD
APPROVAL ON TUITION HIKE**

Inefficiency Trend and A Comparison of Tuition Revenue and Total Education and General Expenses Overtime

**This Research Project is Completed by Association of American Educational Analytics on
November 21, 2014**

**For Interested Parties in California
instname=California State University-San Marcos**



nettuition01=Net tuition revenue is the amount of money the institution takes in from students after institutional grant aid is provided (this is not the same as the net tuition number available in IPEDS which is net of all discounts and allowances applied to tuition and fees)

eandg01 sum=Total Education and General Expenses

OE=Operating Inefficiency in %==>Ratio of Tuition Revenue over Total Education and General Expenses

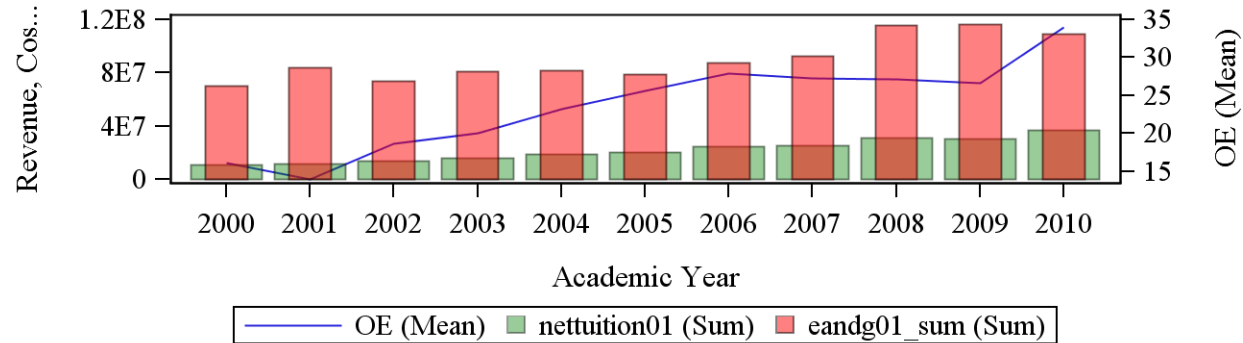
Please Do not Quote without Written Consent from the Association

**AAEA RESPONSES TO UC SCHOOL SYSTEM GOVERNING BOARD
APPROVAL ON TUITION HIKE**

Inefficiency Trend and A Comparison of Tuition Revenue and Total Education and General Expenses Overtime

**This Research Project is Completed by Association of American Educational Analytics on
November 21, 2014**

**For Interested Parties in California
instname=California State University-Stanislaus**



nettuition01=Net tuition revenue is the amount of money the institution takes in from students after institutional grant aid is provided (this is not the same as the net tuition number available in IPEDS which is net of all discounts and allowances applied to tuition and fees)

eandg01 sum=Total Education and General Expenses

OE=Operating Inefficiency in %==>Ratio of Tuition Revenue over Total Education and General Expenses

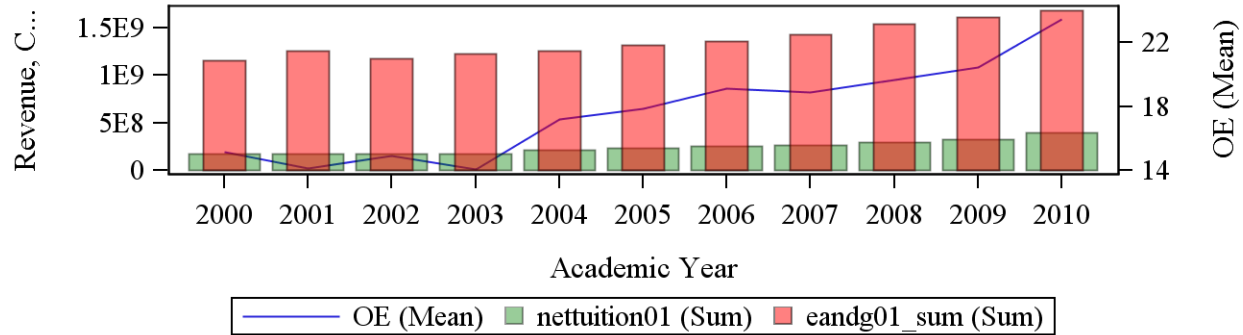
Please Do not Quote without Written Consent from the Association

**AAEA RESPONSES TO UC SCHOOL SYSTEM GOVERNING BOARD
APPROVAL ON TUITION HIKE**

Inefficiency Trend and A Comparison of Tuition Revenue and Total Education and General Expenses Overtime

**This Research Project is Completed by Association of American Educational Analytics on
November 21, 2014**

**For Interested Parties in California
instname=University of California-Berkeley**



nettuition01=Net tuition revenue is the amount of money the institution takes in from students after institutional grant aid is provided (this is not the same as the net tuition number available in IPEDS which is net of all discounts and allowances applied to tuition and fees)

eandg01 sum=Total Education and General Expenses

OE=Operating Inefficiency in %==>Ratio of Tuition Revenue over Total Education and General Expenses

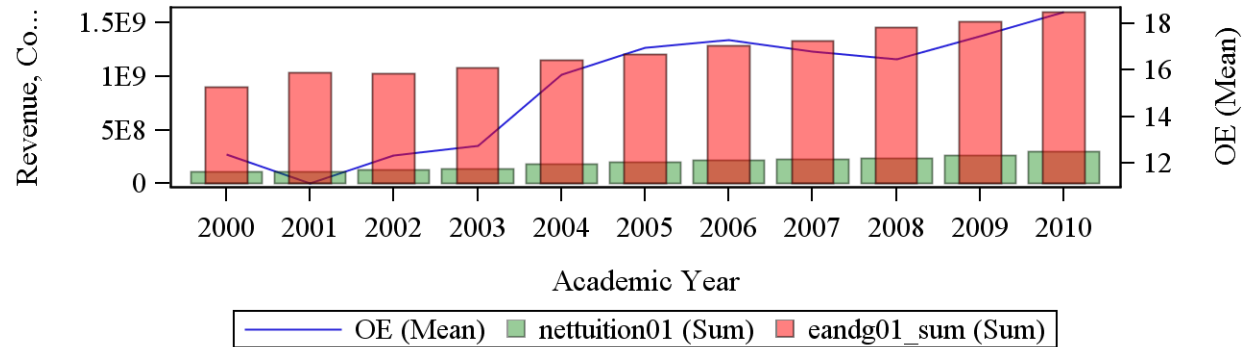
Please Do not Quote without Written Consent from the Association

**AAEA RESPONSES TO UC SCHOOL SYSTEM GOVERNING BOARD
APPROVAL ON TUITION HIKE**

Inefficiency Trend and A Comparison of Tuition Revenue and Total Education and General Expenses Overtime

**This Research Project is Completed by Association of American Educational Analytics on
November 21, 2014**

**For Interested Parties in California
instname=University of California-Davis**



nettuition01=Net tuition revenue is the amount of money the institution takes in from students after institutional grant aid is provided (this is not the same as the net tuition number available in IPEDS which is net of all discounts and allowances applied to tuition and fees)

eandg01 sum=Total Education and General Expenses

OE=Operating Inefficiency in %==>Ratio of Tuition Revenue over Total Education and General Expenses

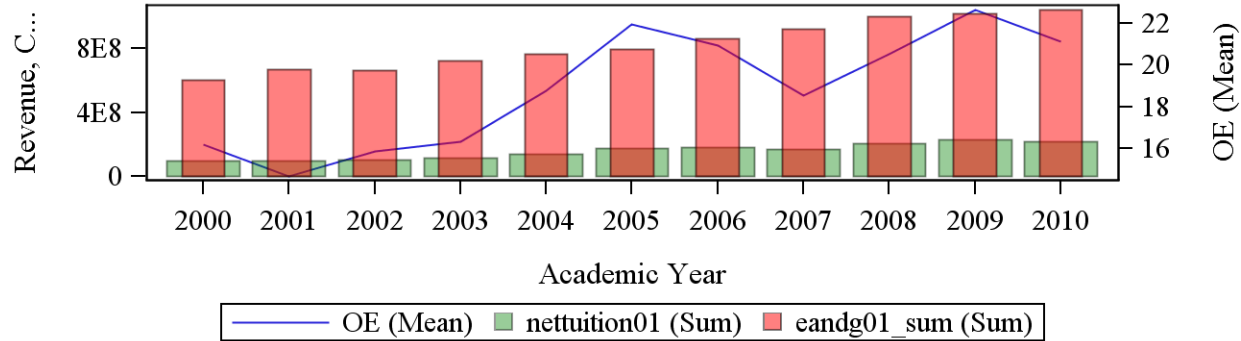
Please Do not Quote without Written Consent from the Association

**AAEA RESPONSES TO UC SCHOOL SYSTEM GOVERNING BOARD
APPROVAL ON TUITION HIKE**

Inefficiency Trend and A Comparison of Tuition Revenue and Total Education and General Expenses Overtime

**This Research Project is Completed by Association of American Educational Analytics on
November 21, 2014**

**For Interested Parties in California
instname=University of California-Irvine**



nettuition01=Net tuition revenue is the amount of money the institution takes in from students after institutional grant aid is provided (this is not the same as the net tuition number available in IPEDS which is net of all discounts and allowances applied to tuition and fees)

eandg01_sum=Total Education and General Expenses

OE=Operating Inefficiency in %==>Ratio of Tuition Revenue over Total Education and General Expenses

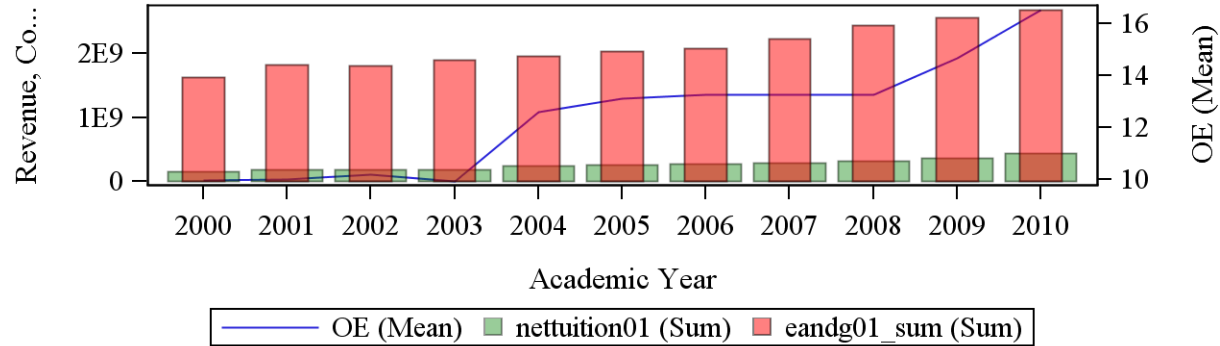
Please Do not Quote without Written Consent from the Association

**AAEA RESPONSES TO UC SCHOOL SYSTEM GOVERNING BOARD
APPROVAL ON TUITION HIKE**

Inefficiency Trend and A Comparison of Tuition Revenue and Total Education and General Expenses Overtime

**This Research Project is Completed by Association of American Educational Analytics on
November 21, 2014**

**For Interested Parties in California
instname=University of California-Los Angeles**



nettuition01=Net tuition revenue is the amount of money the institution takes in from students after institutional grant aid is provided (this is not the same as the net tuition number available in IPEDS which is net of all discounts and allowances applied to tuition and fees)

eandg01 sum=Total Education and General Expenses

OE=Operating Inefficiency in %==>Ratio of Tuition Revenue over Total Education and General Expenses

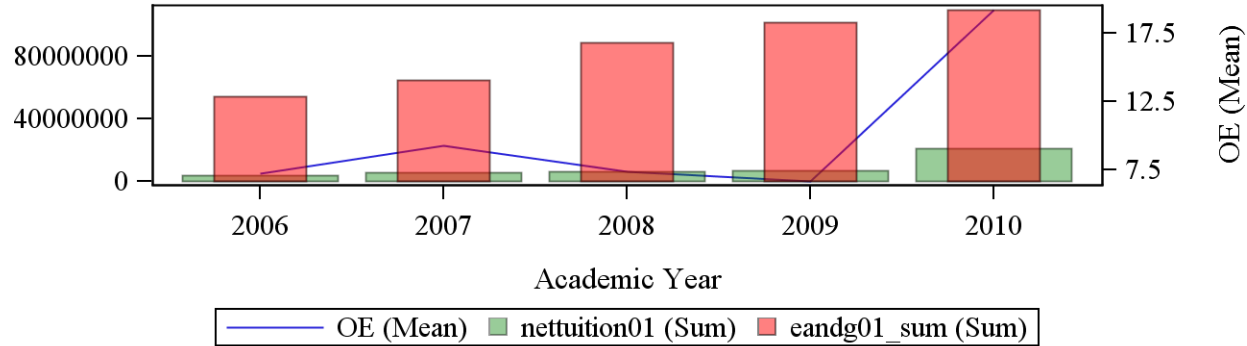
Please Do not Quote without Written Consent from the Association

**AAEA RESPONSES TO UC SCHOOL SYSTEM GOVERNING BOARD
APPROVAL ON TUITION HIKE**

Inefficiency Trend and A Comparison of Tuition Revenue and Total Education and General Expenses Overtime

**This Research Project is Completed by Association of American Educational Analytics on
November 21, 2014**

**For Interested Parties in California
instname=University of California-Merced**



nettuition01=Net tuition revenue is the amount of money the institution takes in from students after institutional grant aid is provided (this is not the same as the net tuition number available in IPEDS which is net of all discounts and allowances applied to tuition and fees)

eandg01 sum=Total Education and General Expenses

OE=Operating Inefficiency in %==>Ratio of Tuition Revenue over Total Education and General Expenses

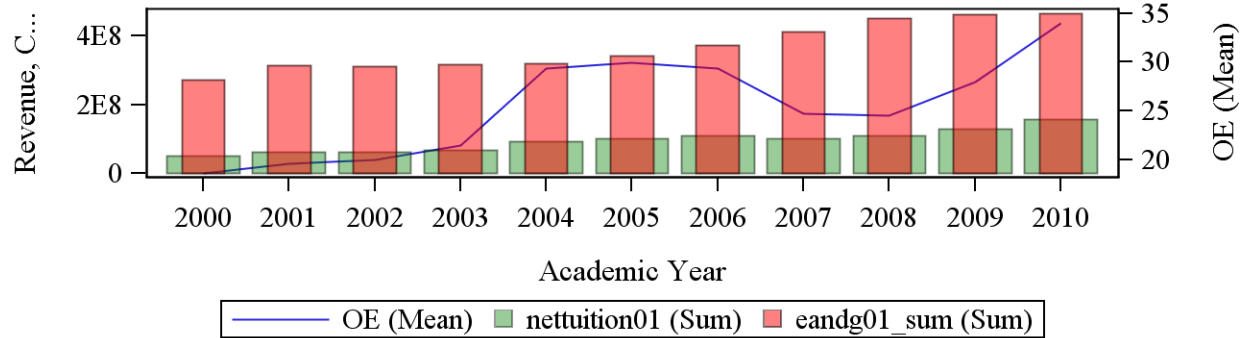
Please Do not Quote without Written Consent from the Association

**AAEA RESPONSES TO UC SCHOOL SYSTEM GOVERNING BOARD
APPROVAL ON TUITION HIKE**

Inefficiency Trend and A Comparison of Tuition Revenue and Total Education and General Expenses Overtime

**This Research Project is Completed by Association of American Educational Analytics on
November 21, 2014**

**For Interested Parties in California
instname=University of California-Riverside**



nettuition01=Net tuition revenue is the amount of money the institution takes in from students after institutional grant aid is provided (this is not the same as the net tuition number available in IPEDS which is net of all discounts and allowances applied to tuition and fees)

eandg01_sum=Total Education and General Expenses

OE=Operating Inefficiency in %==>Ratio of Tuition Revenue over Total Education and General Expenses

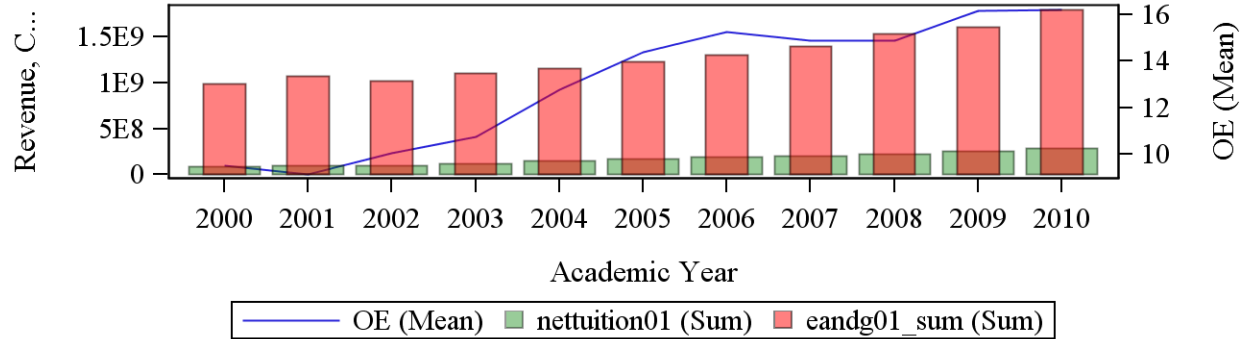
Please Do not Quote without Written Consent from the Association

**AAEA RESPONSES TO UC SCHOOL SYSTEM GOVERNING BOARD
APPROVAL ON TUITION HIKE**

Inefficiency Trend and A Comparison of Tuition Revenue and Total Education and General Expenses Overtime

**This Research Project is Completed by Association of American Educational Analytics on
November 21, 2014**

**For Interested Parties in California
instname=University of California-San Diego**



nettuition01=Net tuition revenue is the amount of money the institution takes in from students after institutional grant aid is provided (this is not the same as the net tuition number available in IPEDS which is net of all discounts and allowances applied to tuition and fees)

eandg01 sum=Total Education and General Expenses

OE=Operating Inefficiency in %==>Ratio of Tuition Revenue over Total Education and General Expenses

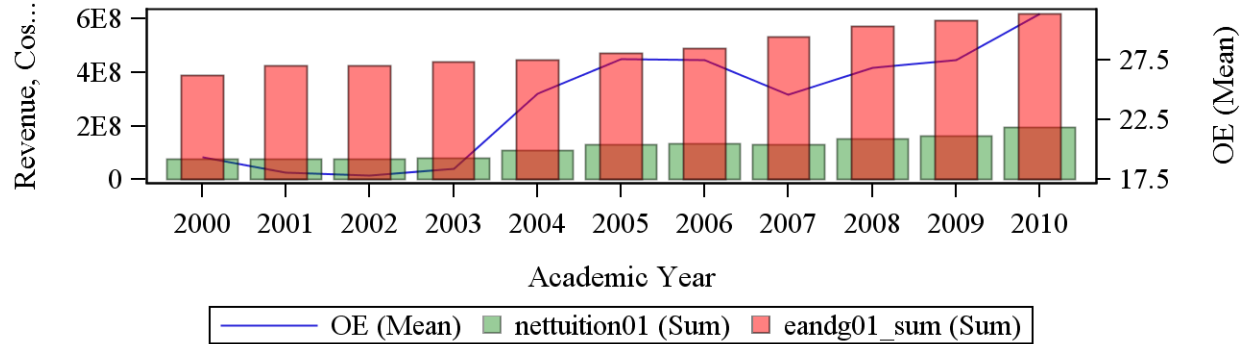
Please Do not Quote without Written Consent from the Association

**AAEA RESPONSES TO UC SCHOOL SYSTEM GOVERNING BOARD
APPROVAL ON TUITION HIKE**

Inefficiency Trend and A Comparison of Tuition Revenue and Total Education and General Expenses Overtime

**This Research Project is Completed by Association of American Educational Analytics on
November 21, 2014**

**For Interested Parties in California
instname=University of California-Santa Barbara**



nettuition01=Net tuition revenue is the amount of money the institution takes in from students after institutional grant aid is provided (this is not the same as the net tuition number available in IPEDS which is net of all discounts and allowances applied to tuition and fees)

eandg01_sum=Total Education and General Expenses

OE=Operating Inefficiency in %==>Ratio of Tuition Revenue over Total Education and General Expenses

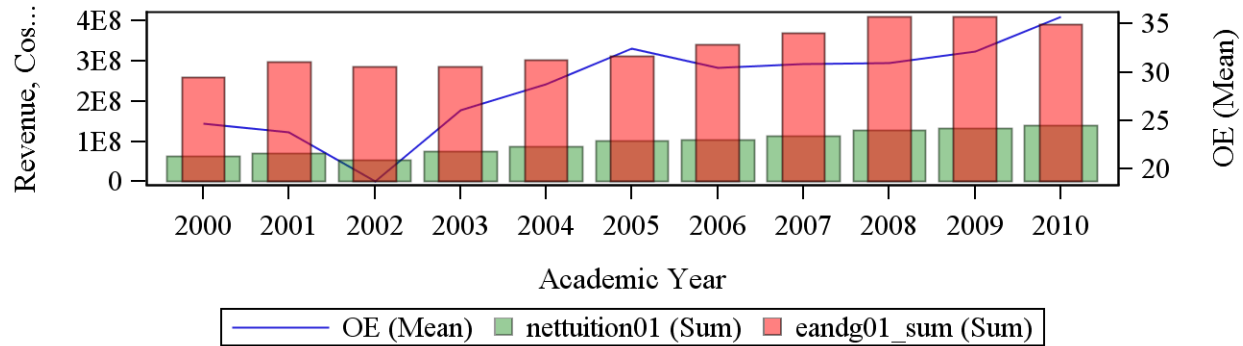
Please Do not Quote without Written Consent from the Association

**AAEA RESPONSES TO UC SCHOOL SYSTEM GOVERNING BOARD
APPROVAL ON TUITION HIKE**

Inefficiency Trend and A Comparison of Tuition Revenue and Total Education and General Expenses Overtime

**This Research Project is Completed by Association of American Educational Analytics on
November 21, 2014**

**For Interested Parties in California
instname=University of California-Santa Cruz**



nettuition01=Net tuition revenue is the amount of money the institution takes in from students after institutional grant aid is provided (this is not the same as the net tuition number available in IPEDS which is net of all discounts and allowances applied to tuition and fees)

eandg01_sum=Total Education and General Expenses

OE=Operating Inefficiency in %==>Ratio of Tuition Revenue over Total Education and General Expenses

Please Do not Quote without Written Consent from the Association