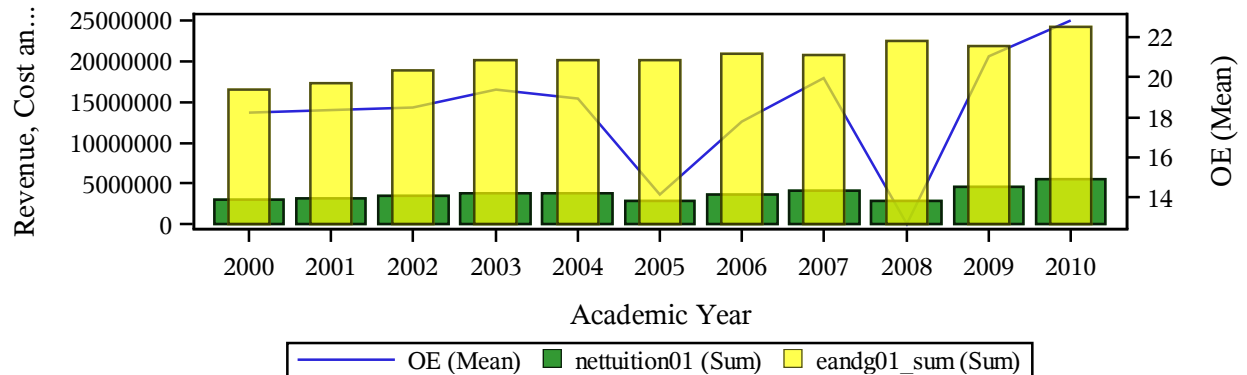


**AAEA RESPONSES TO 15% Planned Colleges and Universities Budget Cut in State of Washington**  
**Inefficiency Trend and A Comparison of Tuition Revenue and Total Education and General Expenses Overtime**

**This Research Project is Completed by Association of American Educational Analytics on November 29, 2014**

**For Interested Parties in State of Washington**  
**instname=Big Bend Community College**



nettuition01=Net tuition revenue is the amount of money the institution takes in from students after institutional grant aid is provided (this is not the same as the net tuition number available in IPEDS which is net of all discounts and allowances applied to tuition and fees)

eandg01\_sum=Total Education and General Expenses

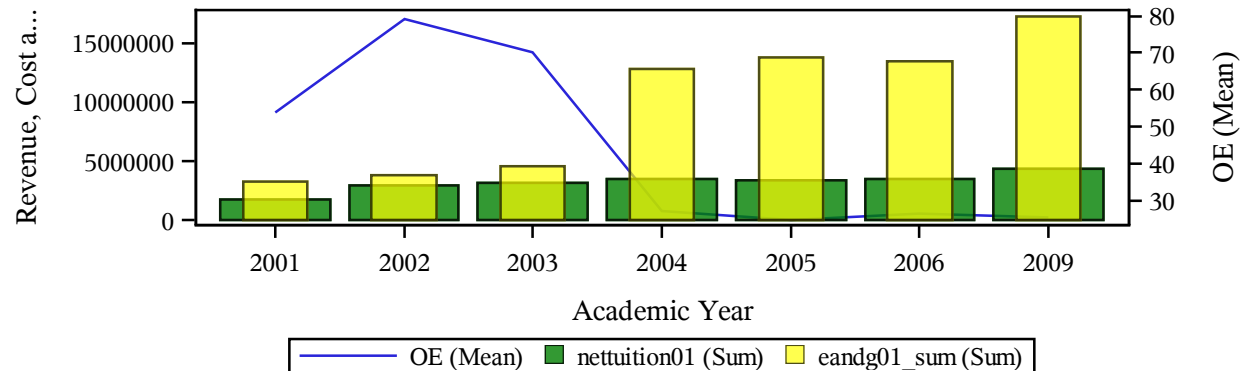
OE=Operating Inefficiency in %=>Ratio of Tuition Revenue over Total Education and General Expenses

Please Do not Quote without Written Consent from the Association

**AAEA RESPONSES TO 15% Planned Colleges and Universities Budget Cut in State of Washington**  
**Inefficiency Trend and A Comparison of Tuition Revenue and Total Education and General Expenses Overtime**

**This Research Project is Completed by Association of American Educational Analytics on November 29, 2014**

**For Interested Parties in State of Washington  
 instname=Cascadia Community College**



nettuition01=Net tuition revenue is the amount of money the institution takes in from students after institutional grant aid is provided (this is not the same as the net tuition number available in IPEDS which is net of all discounts and allowances applied to tuition and fees)

eandg01\_sum=Total Education and General Expenses

OE=Operating Inefficiency in %=>Ratio of Tuition Revenue over Total Education and General Expenses

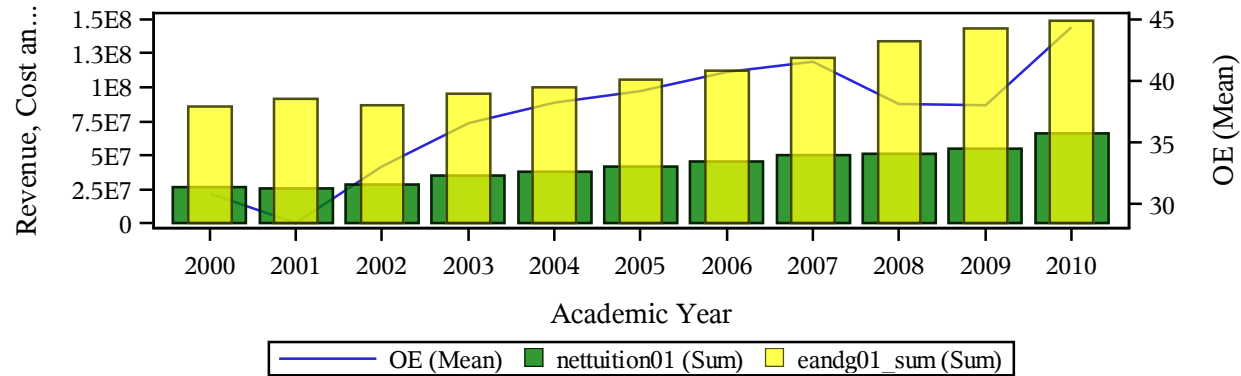
Please Do not Quote without Written Consent from the Association

**AAEA RESPONSES TO 15% Planned Colleges and Universities Budget Cut in State of Washington**

**Inefficiency Trend and A Comparison of Tuition Revenue and Total Education and General Expenses Overtime**

**This Research Project is Completed by Association of American Educational Analytics on November 29, 2014**

**For Interested Parties in State of Washington  
instname=Central Washington University**



nettuition01=Net tuition revenue is the amount of money the institution takes in from students after institutional grant aid is provided (this is not the same as the net tuition number available in IPEDS which is net of all discounts and allowances applied to tuition and fees)

eandg01\_sum=Total Education and General Expenses

OE=Operating Inefficiency in %=>Ratio of Tuition Revenue over Total Education and General Expenses

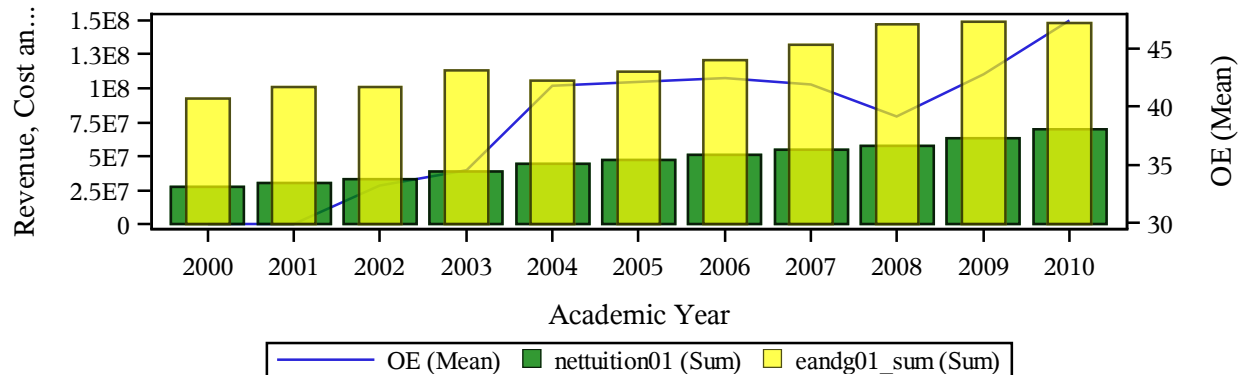
Please Do not Quote without Written Consent from the Association

**AAEA RESPONSES TO 15% Planned Colleges and Universities Budget Cut in State of Washington**

**Inefficiency Trend and A Comparison of Tuition Revenue and Total Education and General Expenses Overtime**

**This Research Project is Completed by Association of American Educational Analytics on November 29, 2014**

**For Interested Parties in State of Washington  
instname=Eastern Washington University**



nettuition01=Net tuition revenue is the amount of money the institution takes in from students after institutional grant aid is provided (this is not the same as the net tuition number available in IPEDS which is net of all discounts and allowances applied to tuition and fees)

eandg01\_sum=Total Education and General Expenses

OE=Operating Inefficiency in %=>Ratio of Tuition Revenue over Total Education and General Expenses

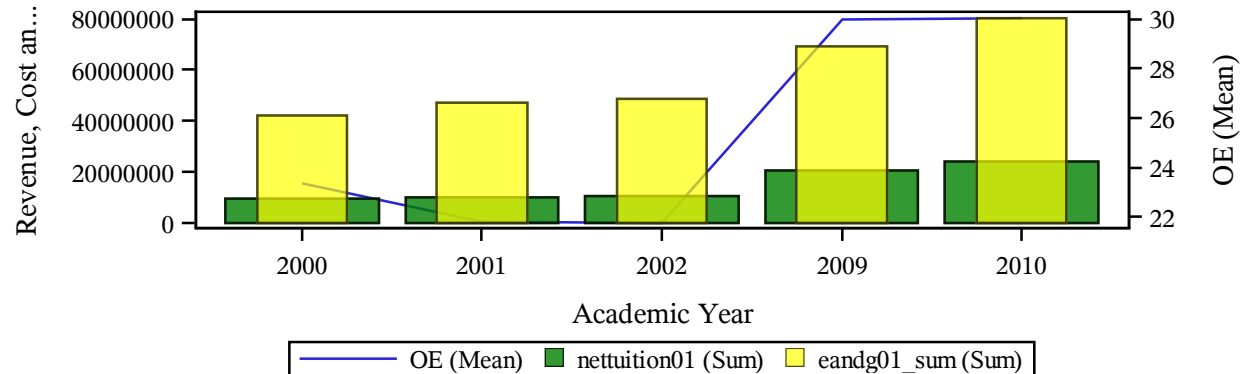
Please Do not Quote without Written Consent from the Association

**AAEA RESPONSES TO 15% Planned Colleges and Universities Budget Cut in State of Washington**

**Inefficiency Trend and A Comparison of Tuition Revenue and Total Education and General Expenses Overtime**

**This Research Project is Completed by Association of American Educational Analytics on November 29, 2014**

**For Interested Parties in State of Washington  
instname=Edmonds Community College**



nettuition01=Net tuition revenue is the amount of money the institution takes in from students after institutional grant aid is provided (this is not the same as the net tuition number available in IPEDS which is net of all discounts and allowances applied to tuition and fees)

eandg01\_sum=Total Education and General Expenses

OE=Operating Inefficiency in %=>Ratio of Tuition Revenue over Total Education and General Expenses

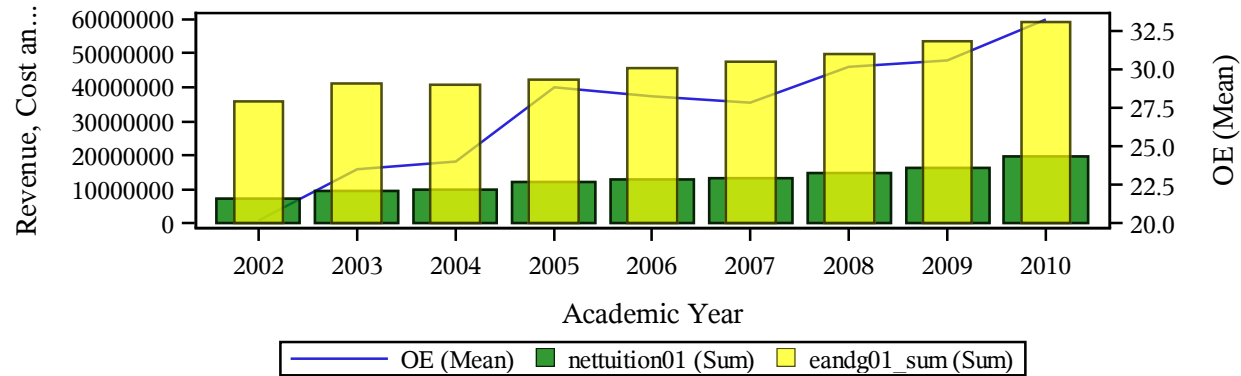
Please Do not Quote without Written Consent from the Association

## AAEA RESPONSES TO 15% Planned Colleges and Universities Budget Cut in State of Washington

### Inefficiency Trend and A Comparison of Tuition Revenue and Total Education and General Expenses Overtime

This Research Project is Completed by Association of American Educational Analytics on November 29, 2014

For Interested Parties in State of Washington  
instname=Everett Community College



nettuition01=Net tuition revenue is the amount of money the institution takes in from students after institutional grant aid is provided (this is not the same as the net tuition number available in IPEDS which is net of all discounts and allowances applied to tuition and fees)

eandg01\_sum=Total Education and General Expenses

OE=Operating Inefficiency in %=>Ratio of Tuition Revenue over Total Education and General Expenses

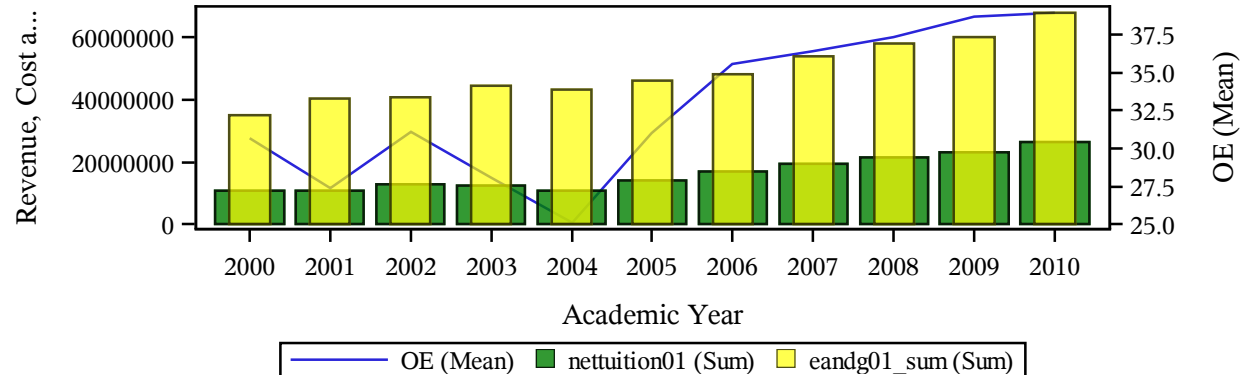
Please Do not Quote without Written Consent from the Association

## AAEA RESPONSES TO 15% Planned Colleges and Universities Budget Cut in State of Washington

### Inefficiency Trend and A Comparison of Tuition Revenue and Total Education and General Expenses Overtime

This Research Project is Completed by Association of American Educational Analytics on November 29, 2014

For Interested Parties in State of Washington  
instname=Green River Community College



nettuition01=Net tuition revenue is the amount of money the institution takes in from students after institutional grant aid is provided (this is not the same as the net tuition number available in IPEDS which is net of all discounts and allowances applied to tuition and fees)

eandg01\_sum=Total Education and General Expenses

OE=Operating Inefficiency in %=>Ratio of Tuition Revenue over Total Education and General Expenses

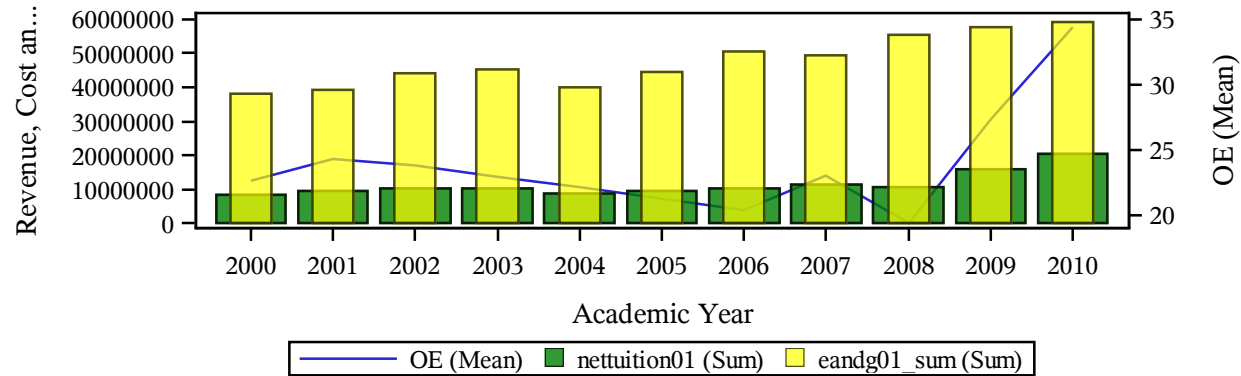
Please Do not Quote without Written Consent from the Association

**AAEA RESPONSES TO 15% Planned Colleges and Universities Budget Cut in State of Washington**

**Inefficiency Trend and A Comparison of Tuition Revenue and Total Education and General Expenses Overtime**

**This Research Project is Completed by Association of American Educational Analytics on November 29, 2014**

**For Interested Parties in State of Washington  
instname=Highline Community College**



nettuition01=Net tuition revenue is the amount of money the institution takes in from students after institutional grant aid is provided (this is not the same as the net tuition number available in IPEDS which is net of all discounts and allowances applied to tuition and fees)

eandg01\_sum=Total Education and General Expenses

OE=Operating Inefficiency in %=>Ratio of Tuition Revenue over Total Education and General Expenses

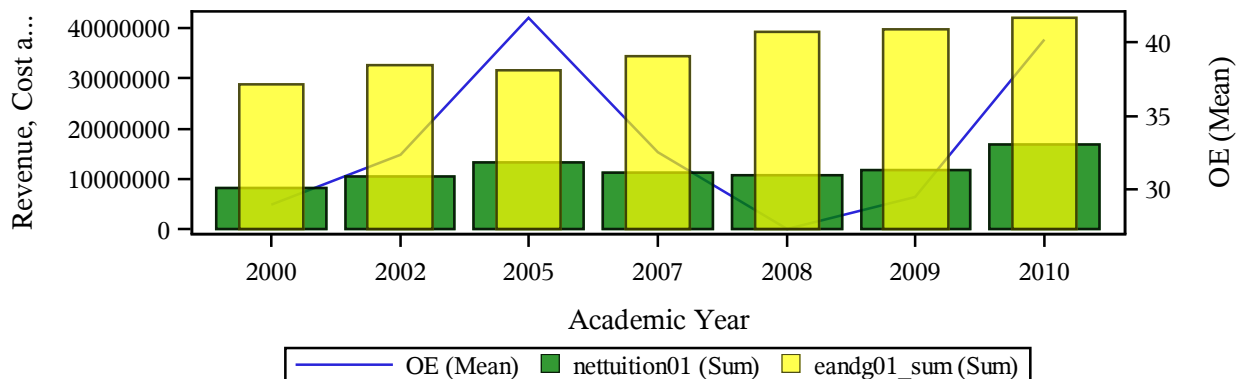
Please Do not Quote without Written Consent from the Association



**AAEA RESPONSES TO 15% Planned Colleges and Universities Budget Cut in State of Washington**  
**Inefficiency Trend and A Comparison of Tuition Revenue and Total Education and General Expenses Overtime**

**This Research Project is Completed by Association of American Educational Analytics on November 29, 2014**

**For Interested Parties in State of Washington**  
**instname=Seattle Community College-North Campus**



nettuition01=Net tuition revenue is the amount of money the institution takes in from students after institutional grant aid is provided (this is not the same as the net tuition number available in IPEDS which is net of all discounts and allowances applied to tuition and fees)

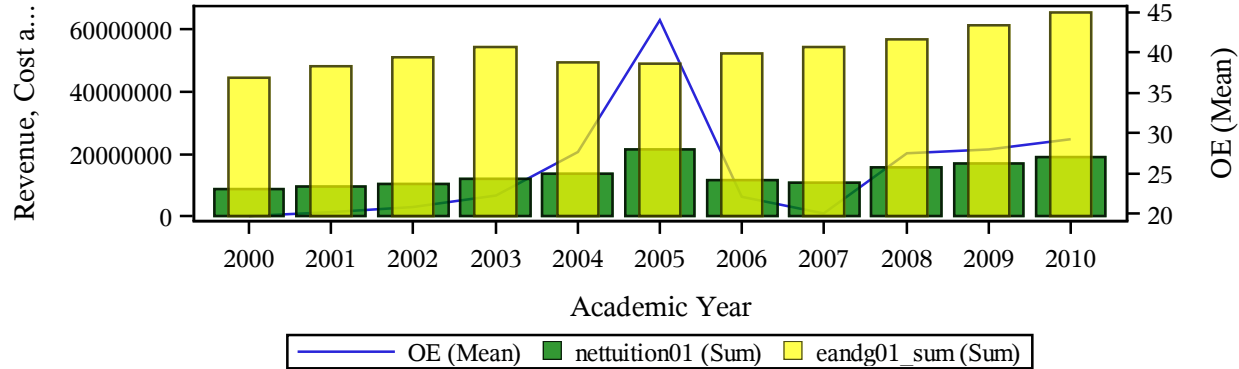
eandg01\_sum=Total Education and General Expenses

OE=Operating Inefficiency in %==>Ratio of Tuition Revenue over Total Education and General Expenses

Please Do not Quote without Written Consent from the Association

**AAEA RESPONSES TO 15% Planned Colleges and Universities Budget Cut in State of Washington**  
**Inefficiency Trend and A Comparison of Tuition Revenue and Total Education and General Expenses Overtime**

**This Research Project is Completed by Association of American Educational Analytics on November 29, 2014**  
**For Interested Parties in State of Washington**  
**instname=Spokane Community College**



nettuition01=Net tuition revenue is the amount of money the institution takes in from students after institutional grant aid is provided (this is not the same as the net tuition number available in IPEDS which is net of all discounts and allowances applied to tuition and fees)

eandg01\_sum=Total Education and General Expenses

OE=Operating Inefficiency in %=>Ratio of Tuition Revenue over Total Education and General Expenses

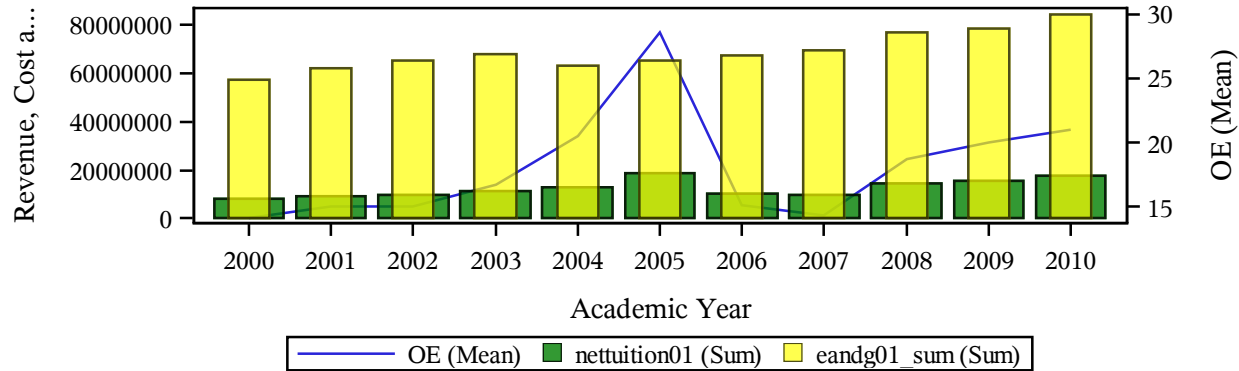
Please Do not Quote without Written Consent from the Association

**AAEA RESPONSES TO 15% Planned Colleges and Universities Budget Cut in State of Washington**

**Inefficiency Trend and A Comparison of Tuition Revenue and Total Education and General Expenses Overtime**

**This Research Project is Completed by Association of American Educational Analytics on November 29, 2014**

**For Interested Parties in State of Washington  
instname=Spokane Falls Community College**



nettuition01=Net tuition revenue is the amount of money the institution takes in from students after institutional grant aid is provided (this is not the same as the net tuition number available in IPEDS which is net of all discounts and allowances applied to tuition and fees)

eandg01\_sum=Total Education and General Expenses

OE=Operating Inefficiency in %=>Ratio of Tuition Revenue over Total Education and General Expenses

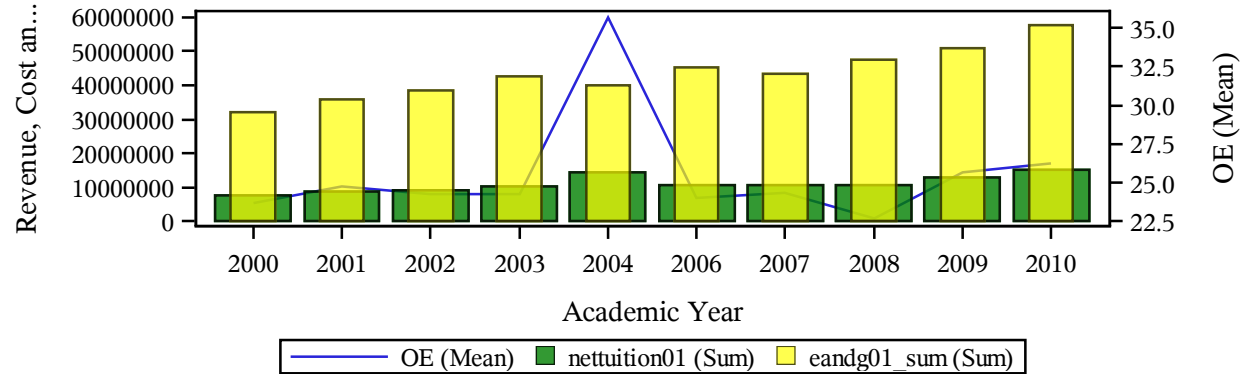
Please Do not Quote without Written Consent from the Association

**AAEA RESPONSES TO 15% Planned Colleges and Universities Budget Cut in State of Washington**

**Inefficiency Trend and A Comparison of Tuition Revenue and Total Education and General Expenses Overtime**

**This Research Project is Completed by Association of American Educational Analytics on November 29, 2014**

**For Interested Parties in State of Washington  
instname=Tacoma Community College**



nettuition01=Net tuition revenue is the amount of money the institution takes in from students after institutional grant aid is provided (this is not the same as the net tuition number available in IPEDS which is net of all discounts and allowances applied to tuition and fees)

eandg01\_sum=Total Education and General Expenses

OE=Operating Inefficiency in %=>Ratio of Tuition Revenue over Total Education and General Expenses

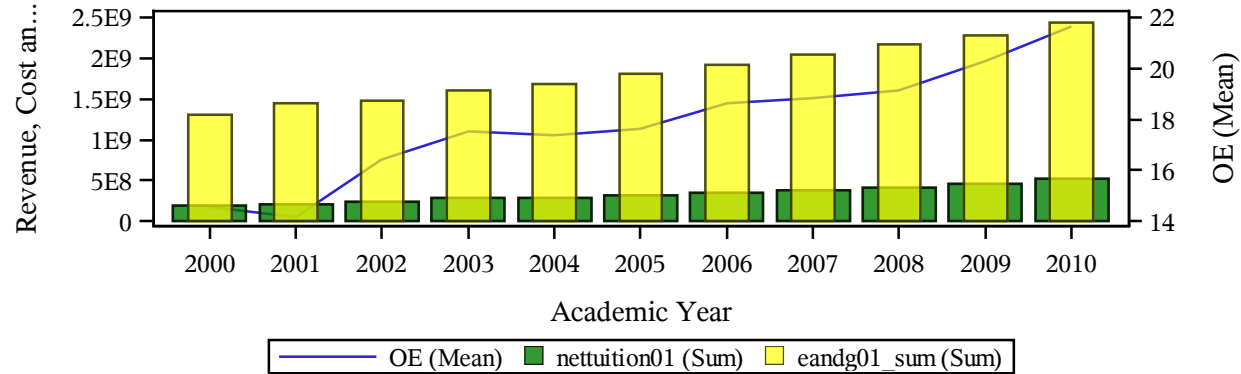
Please Do not Quote without Written Consent from the Association

**AAEA RESPONSES TO 15% Planned Colleges and Universities Budget Cut in State of Washington**

**Inefficiency Trend and A Comparison of Tuition Revenue and Total Education and General Expenses Overtime**

**This Research Project is Completed by Association of American Educational Analytics on November 29, 2014**

**For Interested Parties in State of Washington  
instname=University of Washington-Seattle Campus**



nettuition01=Net tuition revenue is the amount of money the institution takes in from students after institutional grant aid is provided (this is not the same as the net tuition number available in IPEDS which is net of all discounts and allowances applied to tuition and fees)

eandg01\_sum=Total Education and General Expenses

OE=Operating Inefficiency in %=>Ratio of Tuition Revenue over Total Education and General Expenses

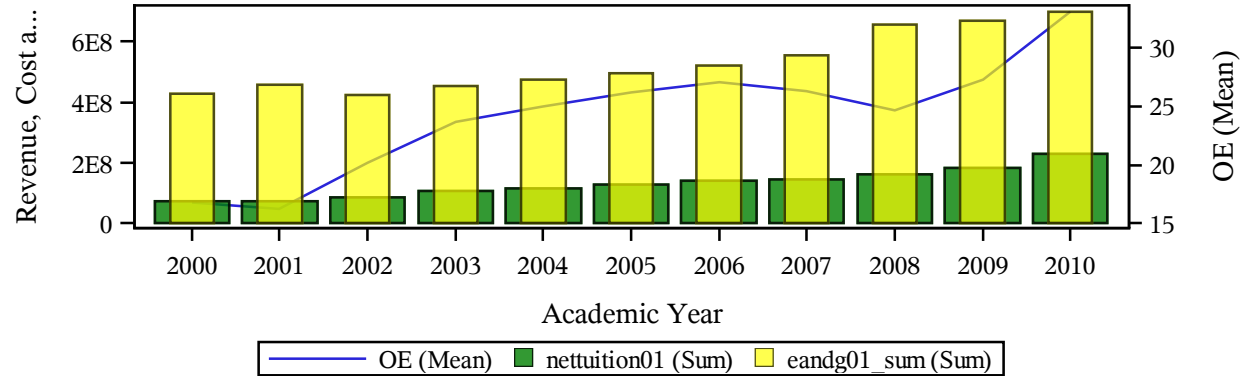
Please Do not Quote without Written Consent from the Association

**AAEA RESPONSES TO 15% Planned Colleges and Universities Budget Cut in State of Washington**

**Inefficiency Trend and A Comparison of Tuition Revenue and Total Education and General Expenses Overtime**

**This Research Project is Completed by Association of American Educational Analytics on November 29, 2014**

**For Interested Parties in State of Washington  
instname=Washington State University**



nettuition01=Net tuition revenue is the amount of money the institution takes in from students after institutional grant aid is provided (this is not the same as the net tuition number available in IPEDS which is net of all discounts and allowances applied to tuition and fees)

eandg01\_sum=Total Education and General Expenses

OE=Operating Inefficiency in %=>Ratio of Tuition Revenue over Total Education and General Expenses

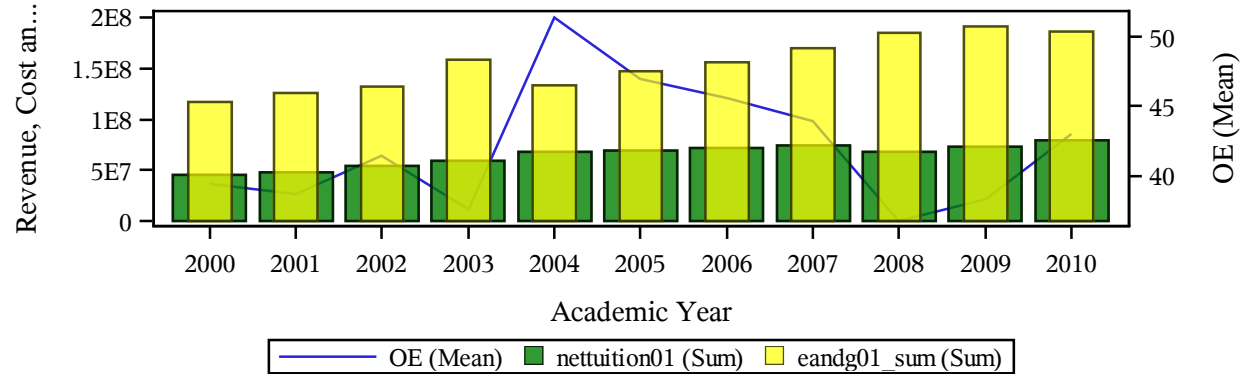
Please Do not Quote without Written Consent from the Association

**AAEA RESPONSES TO 15% Planned Colleges and Universities Budget Cut in State of Washington**

**Inefficiency Trend and A Comparison of Tuition Revenue and Total Education and General Expenses Overtime**

**This Research Project is Completed by Association of American Educational Analytics on November 29, 2014**

**For Interested Parties in State of Washington  
instname=Western Washington University**



nettuition01=Net tuition revenue is the amount of money the institution takes in from students after institutional grant aid is provided (this is not the same as the net tuition number available in IPEDS which is net of all discounts and allowances applied to tuition and fees)

eandg01\_sum=Total Education and General Expenses

OE=Operating Inefficiency in %=>Ratio of Tuition Revenue over Total Education and General Expenses

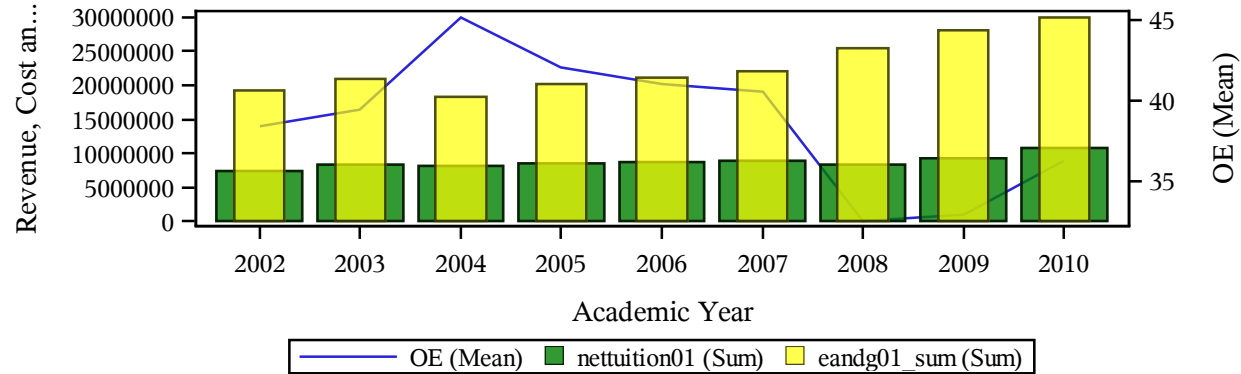
Please Do not Quote without Written Consent from the Association

**AAEA RESPONSES TO 15% Planned Colleges and Universities Budget Cut in State of Washington**

**Inefficiency Trend and A Comparison of Tuition Revenue and Total Education and General Expenses Overtime**

**This Research Project is Completed by Association of American Educational Analytics on November 29, 2014**

**For Interested Parties in State of Washington  
instname=Whatcom Community College**



nettuition01=Net tuition revenue is the amount of money the institution takes in from students after institutional grant aid is provided (this is not the same as the net tuition number available in IPEDS which is net of all discounts and allowances applied to tuition and fees)

eandg01\_sum=Total Education and General Expenses

OE=Operating Inefficiency in %=>Ratio of Tuition Revenue over Total Education and General Expenses

Please Do not Quote without Written Consent from the Association

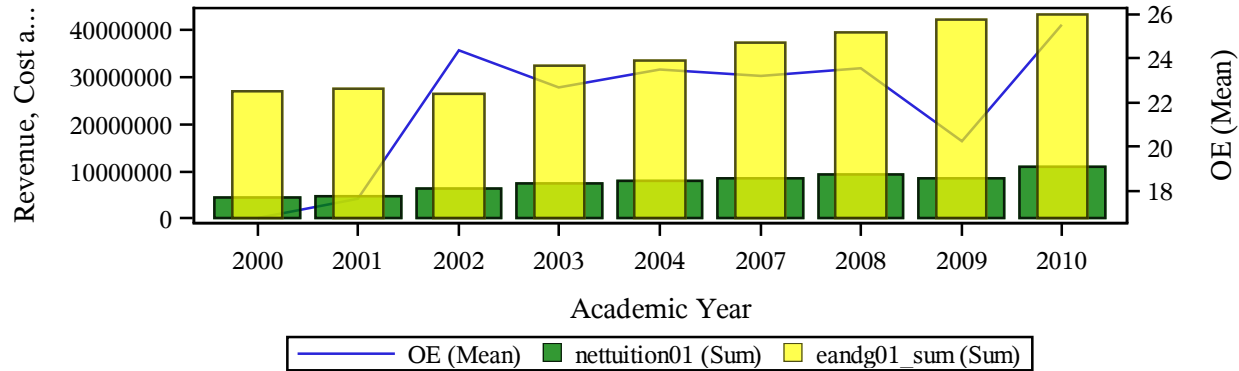


**AAEA RESPONSES TO 15% Planned Colleges and Universities Budget Cut in State of Washington**

**Inefficiency Trend and A Comparison of Tuition Revenue and Total Education and General Expenses Overtime**

**This Research Project is Completed by Association of American Educational Analytics on November 29, 2014**

**For Interested Parties in State of Washington  
instname=Yakima Valley Community College**



nettuition01=Net tuition revenue is the amount of money the institution takes in from students after institutional grant aid is provided (this is not the same as the net tuition number available in IPEDS which is net of all discounts and allowances applied to tuition and fees)

eandg01\_sum=Total Education and General Expenses

OE=Operating Inefficiency in %=>Ratio of Tuition Revenue over Total Education and General Expenses

Please Do not Quote without Written Consent from the Association